



SHORT & LONG RANGE TRANSIT PLAN

2020-2050

Executive Summary

May 2020

COTA



COTA'S FIVE-YEAR STRATEGIC PLAN (2019)
"MOVING EVERY LIFE FORWARD"

www.cota.com/who-we-are/strategic-plan/

This document outlines the future direction for the organization, reflecting the region's robust growth and demand for mobility options.

Short & Long Range Plan Process



DATA

- Demographic
- Congestion
- Operational
- Regional trends



PLANS AND GUIDING DOCUMENTS

- Local Municipal Plans
- Regional Plans
- Development Effects
- Insight2050 Corridor Concepts
- COTA NextGen



STRATEGIC PLAN

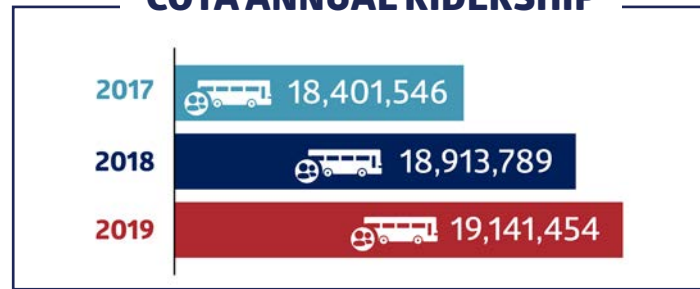


STAKEHOLDER AND PUBLIC FEEDBACK

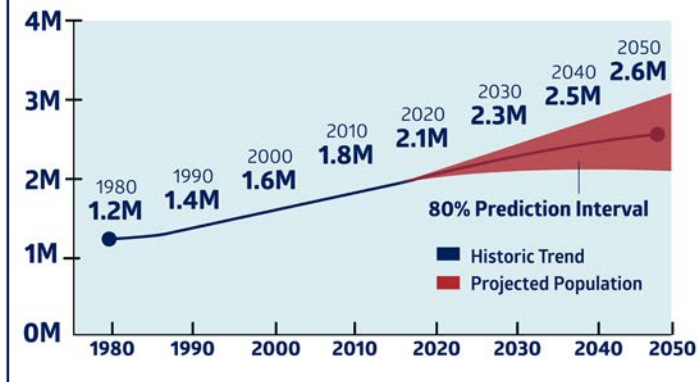
- Ad Hoc Advisory Committee
- General Public
- Business Community
- Educational Institutions

Short & Long Range Transit Plan

COTA ANNUAL RIDERSHIP



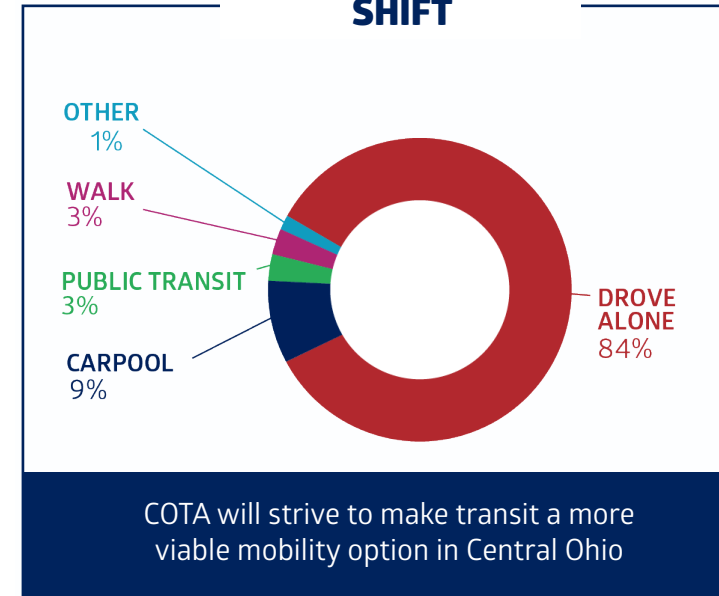
CENTRAL OHIO POPULATION PROJECTIONS 7-COUNTY REGION



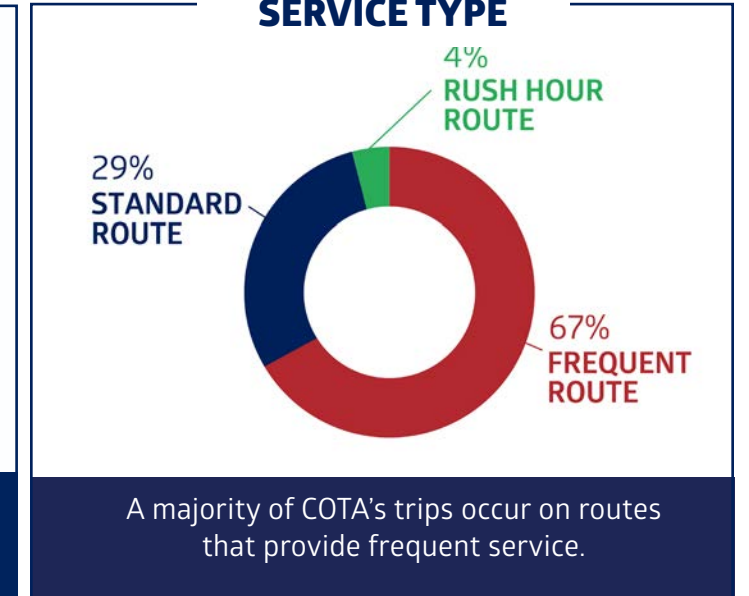
STRATEGIC PLAN GUIDING PRINCIPLES



COMMUTING MODE SHIFT



PASSENGERS BY SERVICE TYPE



THREE LONG RANGE INITIATIVES



High Capacity Transit

... which moves more people, faster, in less physical space, attracts new development and focuses growth.



Smart Mobility Options

... such as self-driving vehicles, first/last mile services, and smart apps, which makes planning and paying for transportation services and job access easier than ever.



Enhanced Bus Service

... that runs more frequently, to more places-ensures residents can access jobs and employers can attract employees because transportation is accessible 24-hours a day.

FOCUSING ON ENHANCING HOW SERVICE IS PROVIDED, SERVICE CHARACTERISTIC INITIATIVES ACHIEVE THREE PRIMARY OBJECTIVES:



Improving Service Frequency



Decreasing Travel Times and Improving Reliability



Improving Overall Service Design

HIGH CAPACITY TRANSIT

SHORT RANGE 2020-2024

- Northwest Corridor Mobility Study
- East-West Corridor Analysis
- Transit-Oriented-Development and potential dedicated lane analysis for the Cleveland Avenue corridor

LONG RANGE 2020-2050

- Build a system of High Capacity Transit



FIXED ROUTE

SHORT RANGE 2020-2024

- Continued level with incremental improvements
- Focus on improving travel times

LONG RANGE 2020-2050

- New lines and line extensions to keep up with regional population and job growth



MICROTRANSIT

SHORT RANGE 2020-2024

- COTA Plus Expansion: Advance a method to deploy multiple first-mile/last-mile microtransit 'zones', connecting the region to the fixed-route bus system

LONG RANGE 2020-2050

- Build a system of first-mile/last-mile connections, including multiple mobility solutions



MAINSTREAM PARATRANSIT

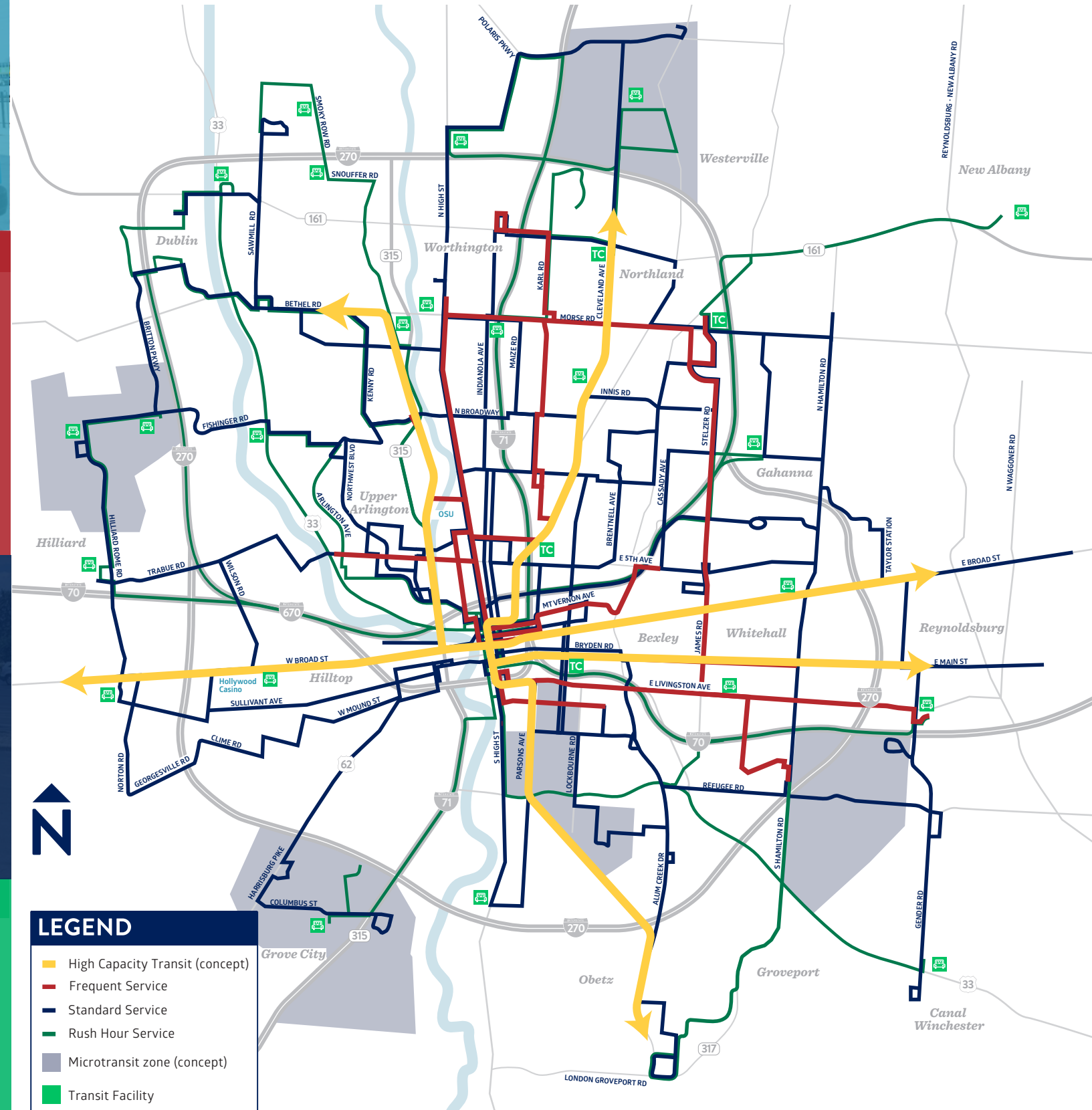
SHORT RANGE 2020-2024

- Explore restructuring ADA service delivery using the model trialed by Mainstream On-Demand

LONG RANGE 2020-2050

- Paratransit Vehicle Replacement(s) per FTA regulations

A CONNECTED SYSTEM TO ALLOW PEOPLE TO MOVE SEAMLESSLY



Some concepts on map are for illustrative purposes only



TO MOVE EVERY LIFE FORWARD



33 North High Street | Columbus, Ohio 43215 | 614.233.1776 | COTA.com